

MCR Freshers' Guide 2025 / 2026

NEW COLLEGE



Copyright © 2025 New College MCR <http://mcr.new.ox.ac.uk/>

This guide builds on and modifies the *The Legrand Orange Book* template originally written by *Mathias Legrand*, subsequently edited by *Vel* for *LaTeXTemplates.com*, published under a CC-NC-SA 3.0 licence.


This edition of the MCR Freshers' Guide was edited by Ala Maksymiuk.
July 2025

Contents

Contents	iii
1 Greetings from your MCR President	1
2 The College	3
2.1 History	3
2.2 College motto	3
2.3 New College today	4
2.4 Further Reading	4
3 The People	5
3.1 The MCR Committee	5
3.2 People in College	7
4 Facilities	9
4.1 New College	9
4.1.1 The MCR - The Rew Nooner Spoom	9
4.1.2 The JCR	9
4.1.3 Hall	10
4.1.4 College Bar & JCR Wine Cellar	11
4.1.5 Sports	11
4.1.6 Gym	12
4.1.7 MCR BBQ	12
4.1.8 The Library	12
4.1.9 Internet and Technology Services	12
4.1.10 Chapel	13
4.1.11 The Gardens	13
4.1.12 College tower	13
4.1.13 Chalet	13
4.1.14 Pigeon hole	14
4.1.15 Laundry	14

4.2	The University	14
4.2.1	Libraries	14
4.2.2	Sports facilities	14
4.2.3	Students union - OUSU	14
4.2.4	The Oxford Union	14
4.2.5	The University Club	15
4.2.6	The Careers Service	15
5	MCR social life	16
5.1	Freshers' Fortnight	16
5.2	Guest night	16
5.3	End-of-year garden party	16
5.4	Exchange dinners	16
5.5	Brunch	17
5.6	Bar nights	17
5.7	Bops	18
5.8	Other events	18
6	Accommodation	19
6.1	Weston Buildings	19
6.2	Castle Mill	19
7	Arrival and Settling In	21
7.1	Bod-card	21
7.2	Room key	21
7.3	E-mail lists	21
7.4	Things to bring	21
7.5	Town	22
7.6	Shops	22
7.6.1	Sporting clubs	22
7.6.2	Bars, Pubs and Clubs	22
7.7	Gowns and academic dress	23
7.8	Terms	23
7.9	Bicycles	24
7.9.1	MCR Bike Share Program	24
7.10	Transportation	24
7.10.1	Buses	24
7.10.2	Trains	24

7.10.3	Airports	24
8	Finances	25
8.1	Battels	25
8.2	Till account	25
8.3	Travel grants, hardship grants and bursaries	26
8.3.1	College Grants	26
8.3.2	Hardship	26
8.4	Working	26
9	Welfare	27
9.1	LGBTQ+ students	27
9.2	Contacts	28
9.2.1	MCR Welfare support	28
9.2.2	College welfare support	28
9.3	Additional Welfare Resources that may be Useful	30
9.4	Doctors	30
9.4.1	Overseas students and visiting students	30
9.4.2	Dentists	30
10	Information for Overseas Students	31
10.1	Money	31
10.2	Banking	31
10.2.1	Online Only Banking	31
10.2.2	Major Banks	32
10.3	Electricity and appliances	32
10.4	Work	33
10.5	Health care	33
10.6	Mobile phones	33
11	Glossary of Oxford Terminology	34
12	Map of New College	38



1. Greetings from your MCR President

Dear New College MCR Freshers,

I'd like to offer you a very warm welcome to New College and to our Middle Common Room community. On behalf of myself and the rest of the committee, we cannot wait for you to join us. Whether you're arriving from nearby or travelling across the world, starting postgraduate study is a pivotal moment and, as I'm certain you'll soon agree, there is no better place to facilitate this change than at New College, Oxford.

Our college is one of the oldest and most beautiful in Oxford, but what makes it even more special is the people and community.

The MCR is the heart of graduate life, providing constant opportunities to engage with like minded people and pause the demands of academia. It's a community run by students for students, and we're proud of the welcoming and inclusive atmosphere we've built together over the years.

Throughout your time here, you will enjoy a wide range of activities and opportunities – everything from formal dinners and bar nights to exchange events with other colleges, sports, movie screenings, walks, yoga sessions, and more. Whether you're looking to socialise, explore Oxford, or just unwind with a cup of tea, there'll certainly be something for you.

The opening weeks of your time here will be full of opportunities to connect, settle in and forge significant bonds. The full and varied timetable engineered for Freshers' Fortnight will also assist you in navigating around the college and the wider University. It won't take you long to feel at home with your New College family. The MCR Committee, a group of fellow students here to represent your interests and make sure your experience is as rewarding and enjoyable as possible, will be here to meet you during this time. If you ever need help - academic, personal, or otherwise - there's always someone to support you, whether that's our welfare reps, peer supporters, or other members of the graduate or college community.

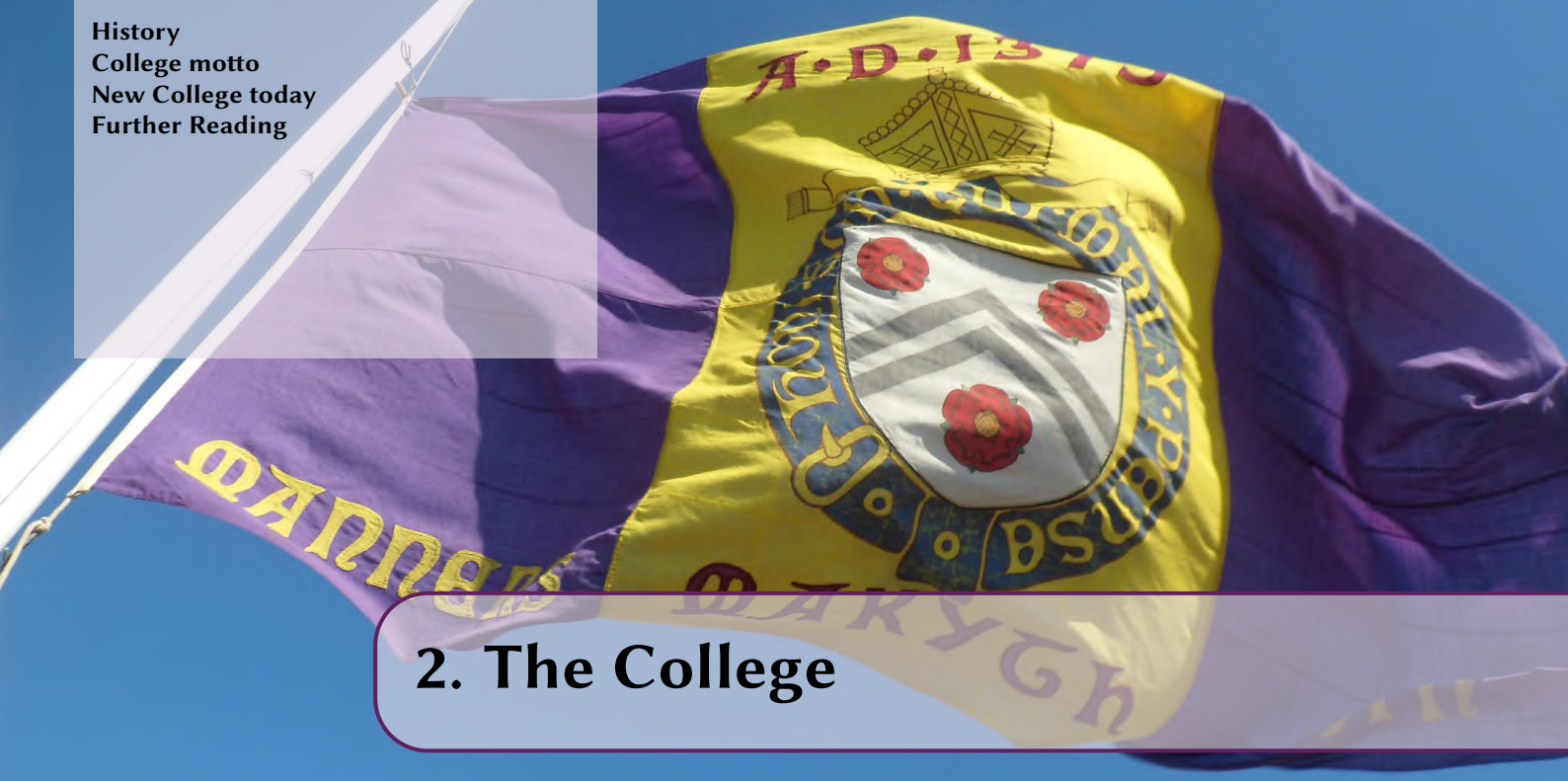
If you desire a committee role, wish to help organise community events, assist behind the bar or simply enjoy yourself during your relaxation time, I am confident the MCR will meet your needs.

Enjoy your summer, and I really look forward to meeting you all very soon in Michaelmas Term.

Kind regards,

Christopher Gregory

MCR President 2025–2026, email: mcr.president@new.ox.ac.uk



2. The College

2.1 History

St Mary's College of Winchester in Oxford, commonly known as *New College*, was founded on the 26th of November 1379. It was the seventh college, of those still in existence, to be founded at Oxford. Since 1400 it has been known as *New College* to distinguish it from the other College of *St Mary* (now *Oriel College*). The College was founded by *William of Wykeham*, who was the *Bishop of Winchester*, *Chancellor of England* and a churchman and administrator in the *King's service*, whose eventual wealth and power overshadowed the humble obscurity of his origins. He established and endowed the College on a scale that, at the time, dwarfed any rival institution. The first part of College to be built was *Front Quad* and the adjoining cloisters, which were constructed between the foundation and 1400. This was the first purpose-built quadrangle in Oxford and is unusual in that it has an oval lawn in the middle. Pre-dating this were the city walls, which date from the thirteenth century: *New College* is obliged to maintain these, and they form a pleasant backdrop to the College gardens.

In August 1651, *New College* was fortified by the *Parliamentarian forces*, and the cloister was used for musketry training. In 1685, *Monmouth's rebellion* involved *Robert Sewster*, a fellow of the College, who commanded a company of *University volunteers*. These volunteers were mostly of *New College* and exercised on the *Bowling Green*.

The College was extended between 1681 and 1707 with the addition of the beautiful *Garden Quad*. At the end of the nineteenth century *Holywell Quad*, with the associated *New Buildings*, was built to cope with expanding numbers in College. The *Sacher Building* was built for graduate students in the sixties, making *New College* the first of the ancient colleges to build a common room especially for graduates. Since 2011, the *MCR* has been located in the cricket pavilion located at the *Weston Buildings*. The *Governing Body* began considering the admission of women in 1964, and *New College's* first female students matriculated in 1979.

2.2 College motto

The College's motto, created by *William of Wykeham*, is "*Manners Makyth Man*". The motto was in many respects fairly revolutionary. Firstly, it was written in *English*, rather than *Latin*, which makes it very unusual in Oxford, particularly in light of the College's age: even *St Catherine's College*, founded in 1965, has a *Latin motto*. Secondly, the motto makes a social statement. While it might initially seem to suggest the benefit of having good manners, this reading does not capture its full scope. The motto's true meaning is that it is not by birth, money, or property that an individual is defined, but by how he or she behaves. And this not only reflects our founder's humble upbringings but it is the creed that guides our College to this day.



Fig. 2.1: William of Wykeham's coat of arms, including his motto



Fig. 2.2: One of the nicer views of New College

2.3 New College today

New College is an intellectual community and one of the best-known colleges in Oxford. New College has some of the most beautiful grounds and buildings in Oxford and an endowment of over £250 million. It has approximately 60 Governing Body fellows, 28 lecturers, 26 research fellows, 380 graduate students (including 100 expected freshers this year) and 450 undergraduate students.

The College is governed by the Governing Body, which consists of professors, tutorial fellows, and senior College officers. Some members of the Governing Body also hold University chairs. The head of College is the Warden, who chairs the Governing Body, oversees all aspects of the College, and represents the College to the world. The current Warden, appointed in 2016, is Miles Young, the former Chairman and CEO of Ogilvy & Mather, a leading global communications firm.

The fellows and senior College officers make up the Senior Common Room, or SCR. Physically, this is located between the Front and Garden quads. You will encounter SCR members at dinner, when they dine at High Table in the hall, or in their offices.

The MCR is made up of graduate students and associate members which include 4th year undergraduate students, visiting students, a few post-doctoral researchers without a college allegiance and some recent alumni. Graduate students are primarily taught by the University but have college to provide additional resources and to serve as a social base.

The JCR, or Junior Common Room, is the undergraduate body. They are taught between College, where they have regular tutorials (hour-long sessions with their tutors, individually or in pairs), and the University, where they have lectures and practicals. Admission of undergraduates is the responsibility of the colleges.

New College is particularly famous for its musical and cultural education. It houses a world-class choir with an associated choir school, and the fellows have written many of the world's leading textbooks in the discipline. The College has recently built a number of state-of-the-art music practise studios for all students to use. Additionally, New College has recently opened a new quad, the Gradel Quadrangles, on Mansfield Road. The building, with its imaginative architectural design, mainly contains undergraduate accommodation, but also an exhibition space, a concert hall, as well as additional study space.

2.4 Further Reading

A College history ranging deep into the middle ages can hardly be done justice in a few paragraphs. So, to anyone whose interest is piqued and who wants to learn more about our College, we wholeheartedly recommend the following books: 'New College' edited by Christopher Tyerman [2010] as being the most accessible, 'New College 1379-1979' by Buxton and Williams [1979] as being the most scholarly, and 'New College' by Rashdall and Rait [1901] as being an excellent and exceedingly witty albeit older account of our history. 'New College, Oxford, and its Buildings' by A. H. Smith [1952] is focused more on the College architecture and there is a series, called 'Victoria County History', in which the section on New College is very good [Oxfordshire series, Volume 3, 1954]. For more miscellaneous readings, have a look at the '[New College Notes](#)', a small online journal for College matters.

3. The People

3.1 The MCR Committee

The MCR is run by a committee of students. The committee organises events, provides welfare support, and represents the postgraduate student body to the College and University. The committee members are a great point of reference if you have any questions, any suggestions, or wishes. Especially upon your arrival at the College, please feel free to contact the committee with any questions you might have about New College or the University. Our e-mail addresses simply follow the usual pattern of *firstname.lastname@new.ox.ac.uk* (which is valid for most members of the College). If you are unsure of an e-mail address you can also search on www.ox.ac.uk/contact as well as refer to the MCR web page at <https://mcr.new.ox.ac.uk>.

The MCR committee is made up of executive and non-executive positions. Getting involved in the committee is great fun and a good way of being part of College life. You will hear more about how you can do this during Freshers' Fortnight.

President: Chris Gregory

Hey! I'm Chris, an MPhil student reading Economics. Outside of my studies, my time is largely split between serving as the MCR President, playing Blues Football, or wandering aimlessly around the New College grounds. Feel free to come and say hi or chat to me about anything (bonus points if it's about finance or football).



Vice-President: Ala Maksymiuk (she/her)

Hi, I'm Ala, a DPhil student in Computer Science focusing on AI for drug discovery. When I'm not complaining about debugging, I enjoy bouldering, hiking, playing an electric guitar and reading.



Treasurer: Pat Flood

Pat is a History student specialising in the eighteenth-century. He is most commonly found trying to find decent coffee in Oxford, and planning the next big social engagement. He specialises in nuanced discussions about history & people that most find dull.

**Social Secretary: Molly Drake (she/her)**

Hey I'm Molly, I'm a DPhil student in the AMES faculty. You can always catch me at a bop or bar exchange, rambling on about the niche figurines I'm studying.

**Social Secretary: Barbie Tyler (she/her)**

I'm Barbie, a DPhil Student on the Chemistry in Cells programme (though I don't do any Chemistry nor anything in cells). I am usually found rowing and subsequently running late to an MCR social.

**Welfare Officer: Belle Rockett (she/her)**

Belle is reading for the DPhil in Classical Languages and Literature, specialising in the philosophy of ancient music theory. Born and raised in Shropshire, she previously studied in Edinburgh and Cambridge. When she's not contemplating how to climb out of Plato's Cave, you'll find her rowing, reading terrible romance novels, and trying to pet every dog she sees.

**Welfare Officer: Emily Hudson (she/her)**

Emily is from Wales and is studying for a DPhil in Condensed Matter Physics. When she isn't in the lab, she's talking about the lab, or trying to distract herself from the lab by exploring the green spaces around Oxford.

**House Officer: Albert Magnell**

Albert is doing an MPhil in economics. His favorite activities, besides theorizing about economic growth and evolution, are to wander the Ashmolean and explore the local coffee scene.



Bar Officer: Andrew Smith (he/him)

Andrew is a musician from central Scotland, currently pursuing an MSt in Music (Performance). Within New College, he oscillates rapidly between the Clore Music Studios and the bar, where he can often be found experimenting with cocktails and attempting to perfect the classics. Outside of his musical and MCR duties, he enjoys seeking out the perfect cup of coffee and taking long, contemplative walks through Christ Church Meadow.

**Wine & Cheese Rep: George Exley (he/him)**

George is a clinical medicine student from North Yorkshire. He mostly spends his time telling his patients to cut down on alcohol and eat healthier, then supplies our students with plenty of wine and cheese when he gets home. In his free time he loves spending time outdoors doing sport, cooking, and scouring the reduced aisle and fb marketplace for deals.

**LGBTQ+ Rep: Mario Stepanik (he/him)**

Through my DPhil in Neuroscience, I try to understand why psychedelics can help people heal in various contexts and I study how they work using computational modeling of brain dynamics. In my role as LGBTQ+ rep, I hope to help create an environment in which no LGBTQ+ rep is necessary anymore. Outside my research, I love to dance and be involved in Oxford's many societies.

**Equality and Diversity Officer: Syed Khalid****Other Positions!**

We have several other positions on the MCR committee which are currently unfilled as a result of the previous students in these roles graduating this summer or fulfilling other positions. These include Arts and Culture Rep, Disabilities Rep, Women's Rep, IT Officer, Environmental Rep, Sports Rep and more! We are very excited to fill all of these positions once the new term starts and will be electing new people a couple of weeks into term. Do reach out if you would be interested in these roles!

3.2 People in College

Warden The Warden is the head of College, and is ultimately responsible for all aspects of College life. Since August 2016, this role is held by Miles Young, the former Chairman and CEO of one of the world's largest communications groups, Ogilvy & Mather.

The Warden lives in *The Warden's Lodgings*, accessed via the Front Quad. He also has a private garden (*the Warden's garden* – starting to get the conventions?) which has amazing views of New College, Hertford College, and All Souls College. Appointments to see the Warden can be made through the Warden's PA (warden@new.ox.ac.uk).

Tutor for Graduates The Tutor for Graduates, Prof. Nino Luraghi, is a College fellow who, in addition to his academic duties, oversees the general well-being of the MCR within the New College community. The Tutor for Graduates also reviews each graduate student's termly reports and negotiates with faculty supervisors and College advisers as appropriate. Additionally, she signs DPhil graduate applications for transfer or confirmation of status, and liaises with the Proctors, the University's regulatory officers, on the behalf of College members. Graduate students may also draw on certain academic allowances, and the Tutor for Graduates reviews all these applications, as well as advises on scholarship possibilities.

The Tutor for Graduates meets the MCR President regularly to discuss academic and social life in the MCR, invites regular groups of graduates to High Table dinners, and hosts a couple of full MCR dinners in Hall each year. Finally, the Tutor for Graduates represents the MCR to the Governing Body, the sovereign body of College, which meets around nine times a year.

Any graduate who wishes to discuss their academic or social progress is referred to their College adviser in the first instance, but if you encounter any problems requiring more urgent attention, the Tutor for Graduates is always available. All enquiries concerning graduate matters should be directed to the Tuition Office, run by Freyja Madsen (freyja.madsen@new.ox.ac.uk). You can contact Prof. Luraghi at nino.luraghi@classics.ox.ac.uk.

Your College Advisor The Tutor for Graduates assigns each graduate student an advisor in College, typically a College fellow who works in the subject area of their advisee, but who is not their advisee's main supervisor. Your advisor is supposed to be your first port of call if you have any academic difficulties on which you would like an independent opinion. You will probably first meet your College adviser during the graduate dinner in freshers' fortnight. If not, your advisor will contact you during your first term via your Oxford email address. The purpose of this contact is purely to touch base and ensure your transition to Oxford is proceeding smoothly. You are also encouraged to contact them. If you have any problems with your advisor, please contact either the MCR President or the Tutor for Graduates.

Bursar The Bursar, David Palfreyman, is responsible for the College's finances. If you have any unforeseeable financial difficulties, he may be able to help you. Appointments to see him should be made through his secretary, either by going to the Bursar's Office (4OB 1) or by emailing bursar@new.ox.ac.uk.

Home Bursar The Home Bursar, Gez Wells, is responsible for the domestic side of College life, including accommodation, College staff, and food. He is also part of the welfare team. Contact him either by e-mail (gez.wells@new.ox.ac.uk) or in the Home Bursary on the ground floor of 4OB.

Dean The Dean, Prof. Michael Burden, is responsible for discipline in College. Day-to-day management of disciplinary matters is carried out by the Assistant Dean and Junior Deans. If you want to hold an event in College, you have to apply to the Assistant Dean for permission. Hopefully, this is the only time you will have to see the decanal team! I

IT Officer The IT team, led by James Dore, is responsible for the computer provision in College. They are available to deal with any computer-related issues you may have. They have an office in the Garden Quad (12OB 2) and can also be reached through helpdesk@new.ox.ac.uk

Welfare Fellows (Cox/Salvesen Fellows) College employs two Junior Fellows who also have a welfare role; they are called the *Cox and Salvesen Fellows*. These fellows are specifically devoted to student welfare, and any student should feel free to reach out to them for any reason concerning their academic, social, or personal life. Currently the Cox Fellow is Tom Metcalf (andrew.ramos@new.ox.ac.uk) and the Salvesen Fellow is Bethany Dubow (bethany.dubow@oriel.ox.ac.uk).

Porters The Porters operate from the lodge at the Holywell Street entrance, and are the first port of call for all everyday logistical issues in College, e.g. lost keys, security, post, etc. The Porters lodge is available 24 hours a day, and deals with all the various and quirky needs of College members. If they cannot help you, they can almost certainly find you someone who can.

There is another porters' lodge at the Weston buildings, though this runs more limited hours: from 8.00 am–8.00 pm on weekdays and Saturdays, and is closed on Sundays.

4. Facilities

4.1 New College

4.1.1 The MCR - The Rew Nooner Spoom

This is your common room - the actual MCR. It was named after the Rev. Spooner, Warden of New College from 1903-1924, who was famous for his verbal gags known as *Spoonerisms*, adopted in naming the room. The MCR is commonly called *the Spoom*. Since 2009, the Spoom has been located in the Weston Sports Pavilion and is undoubtedly one of the most comfortable and inviting MCRs in Oxford. It is accessible 24 hours a day and has a 49" television, table football, board games, books, coffee machines, Wi-Fi, and newspapers as well as other publications. The TV comes equipped with Netflix, Amazon Video and a selected range of channels. It also contains the *MCR Bar* which is opened regularly - usually on Wednesday and Saturday nights during term time, as well as after guest night dinners. It is also used for a variety of other events throughout term time.

The MCR building also contains a TV room which has a separate 42" television with a Nintendo Wii and PS4 (doubling as Blu-ray/DVD player). The selection of channels is wider than in the Spoom and includes Sky Movie, Sky Atlantic, Sky Sports, BT Sports and ESPN. There is also a mini book swap where you are welcome to donate books and borrow books for as long as you like, the mix is quite eclectic.

New College takes pride in its inclusiveness. Gender-neutral toilet facilities have been in place since 2022. Moreover, the New College MCR urged the administration to commit to refurbishing the gendered bathrooms inside the MCR pavilion into individual gender-neutral toilets with integrated washing facilities and floor to ceiling doors before 2023, and to a more extensive refurbishment of all remaining gendered New College bathrooms by 2024.

The MCR is now home to the brand new garden. The MCR garden, located by the Weston Buildings laundry room, is a place for all MCR members to get their hands dirty and partake in growing their food. The garden grows tomatoes, potatoes, courgettes, strawberries, carrots, beets, and more for the MCR community to enjoy! We are always looking for people to help with the garden planting and care process, if you are interested let one of your MCR Environmental Representatives know.

Access to these rooms and the Sports Pavilion is by your bod-card. If you are confronted with any bod-card malfunction issues, contact either the porters lodge or the maintenance team (maintenance@new.ox.ac.uk).

4.1.2 The JCR

Graduate students are also members of the Junior Common Room (primarily the undergraduate body of College). The physical JCR is located in Garden Quad and has a satellite TV, a pool table and games consoles. There are also a few computers that can be accessed with New College credentials.



Fig. 4.1: The Rew Nooner Spoom

4.1.3 Hall

Hall refers to the dining hall. The Hall is located in the oldest part of College with the Buttery next to it. Food is available to graduates during term time. For meals that do not require booking you pay with your Bod card and tills. You may bring guests but you will have to pay for them as cash and bank cards are not accepted. Booking for meals are made [online](#) and is usually available on Thursdays for the next week. The most up-to-date prices are available at <https://www.new.ox.ac.uk/battels>.

Breakfast: Breakfast is available from 8:00 am to 9:00 am on weekdays and 11 am to 1 pm on weekends. A choice of an *English* cooked breakfast (sausage/vegi-sausage, potatoes, mushrooms etc) or *continental* breakfast (cereal, yoghurt, fruit, pastries etc) is available and charged per item, for a total of around £4. Breakfast is paid for with your Bod card and tills. No prior booking is required

Lunch: Lunch is available 12:15 am to 1.30 pm on weekdays. Lunch can be charged per item individually, a meal consisting of main, potatoes, veg and salad will be charged at ~£5. Lunch is paid for with your Bod card and tills. No prior booking is required.

Dinner: Dinner comes in two sittings, early and late, usually referred to as *informal hall* and *formal hall* respectively. As of 2024, evening meals cost ~£6.00 inclusive of soup, salads, a main course, potatoes/pasta, vegetables, and dessert. **Formal hall requires booking** and is paid from your battels, costing ~£9.50. If you want to go to dinner in hall, you must sign up by 10 am on the day of dinner in the Hall. This is done on-line at <https://newmeals.new.ox.ac.uk/>, where you also have to specify the sitting you wish to attend.

Formal hall is held every Tuesday, Thursday and Sunday during term time, and is served. Those dining must be seated by 7.15 pm. Attendees stand for grace and sit after grace has been said. Unusually for Oxford, diners do not need to stand up when the Fellows leave at the end of dinner. During these dinners all College members (but not their guests - even if a member of the University) must wear their gowns, but casual clothing can be worn underneath.

Informal hall is available every day, cafeteria style, and food can be bought between 5:45 pm to 6:30 pm (7:15 pm on Monday and Wednesday). Informal hall is paid for with your Bod card and has to be booked before 10am on the given day. There is no dress code.

Guest Nights: There are occasionally other special dinners, in particular guest night dinners which are held fortnightly on odd-numbered weeks of full term. These guest dinners are a great favourite of the MCR for their lavish three-course catering and the customary after-parties. One great perk of New College dining is that MCR members may bring up to two guests. Guest night dinners are charged at ~£ 23 person (or ~£ 30.00 for guests). **Guest Nights require booking** and is paid from your till account. No gowns are required but dress code is smart.

Dining on high table: Fresher graduates may dine at high table once during their first year with the Tutor for Graduates (if they reply fast enough to the invitation emails). This will be advertised during term. You could also try to persuade your College adviser to invite you to dine at high table. Additionally, up to four MCR members can also sign up for high table at their own expense on Thursdays during full term by contacting the SCR butler (hassan.hamed@new.ox.ac.uk).

4.1.4 College Bar & JCR Wine Cellar

The College bar, beer cellar, or JCR bar, is primarily College run. It is open all day offering sandwiches, cakes, coffee and cold beverages. It is a popular space for work during the day, along with the adjacent Undercroft. It serves alcohol from 6 pm to 11 pm every day during term, and is sometimes open during vacations. The bar is accessed from beneath the Hall, or through a side door from Monk's Passage.

Drinks are cheap (considerably cheaper than in town), and only slightly more expensive than at the MCR bar. It is cheaper to pay using your Bod card, but the bar accepts cash and cards as well.

The JCR operate their own wine cellar in the basement of Garden Quad Staircase 7, which is also available to the MCR. It is usually open before formals and occasionally before MCR guest nights. The wine cellar offers good wines at wholesale prices, and the cost is charged to your Battels account

4.1.5 Sports

New College has one of the most beautiful sports grounds in Oxford, located next to the Weston Buildings on St Cross Road. This has football pitches, rugby pitches and one hard tennis / netball court for use throughout the year. In the summer the cricket pitch and nets, grass tennis courts, a volleyball net and punts become available for use. In the pavilion there is also a squash court, table-tennis table and a rowing machine suite. Many of these facilities can be booked with the porters in the Weston lodge or by using the [online booking system](#). You can borrow equipment from the Weston lodge for most of these sports. We also have a punt shed located at the Weston sports ground and these may be taken out from here for use during the summer.



W1 looking far too serious.



M1 attempting to carry their cox safely.

New College has a wide range of sports teams and the collegiate nature of the University makes it very easy to get involved in sport at whatever level suits you, from playing socially to competitively. Most teams include members of both the JCR and MCR. You will receive more details about how to get involved with the College sports teams during Freshers' Fortnight.

Rowing is one of the most popular sport in Oxford and is a very good way to meet lots of people, stay fit and try something typically Oxonian. New College has a very active boat club, with a healthy rivalry with Magdalen. If you want to try it, several novice boats run during Michaelmas term, along of course opportunities for experienced rowers. Most rowers start out as beginners and learn in the first term. The highlight of the rowing year is Summer Eights, a multi-day competition in May where all colleges try to touch (or "bump") into each other. Hundreds of people come down to watch, with plenty of drinks. All the specifics will be provided during the welcome event run by the New College Boat Club (NCBC) during Freshers' week.

If you don't fancy rowing, the college has very welcoming teams for Rugby, Football, Netball and Cricket. All of these teams have large contingents that play weekly in college and do not require as many early mornings if you prefer to lie in. If you are interested in any of these sports do get in touch with the MCR committee as they will likely know someone who plays it within college.

4.1.6 Gym

New College does not currently have its own gym however members of College have free access to the University gym at the Iffley Road Sports Centre. To gain free access to Iffley Road gym, simply bring your Bod card to the centre reception and inform the attendant of your College membership. You will also be asked to fill out some paperwork. There are other work-out options, with their own various extra fees attached. The University Club offers a student pass to its gym, also located nearby on Mansfield Road. There is also a PureGym and a Buzzgym facility within Oxford city centre. Look online for more details and current membership availability and prices.



Fig. 4.2: The College sports ground

4.1.7 MCR BBQ

In 2013, the MCR had a communal BBQ built behind the cricket pavilion overlooking the sports ground, and has recently purchased a bigger gas BBQ stored at the MCR. It is currently available for MCR events only. The MCR committee usually organizes BBQ-related events in the end of Trinity term and during the summer break.

4.1.8 The Library

The College has a library which is located in the Holywell Quad. New College Library is open daily from 8.00 am–2.00 am all year round. The Library's collections serve the needs of taught-course students at New College, but they also include internationally renowned holdings of **early printed books and manuscripts** and archives and other areas of research strength which can support research as well. All New College graduate students are encouraged to use the Library and they have borrowing privileges for its lending collection of books, **films on DVD**, CDs, and music scores. The Library welcomes book purchase requests from all New College students. To suggest new books for the Library, please use the book purchase **request service**; MCR members may also **book the Library's Group Study Room**. Further information on what New College Library and Archives provides is available via its **website**. You can connect with New College Library on **Twitter** and on **Facebook** too. Graduate students interested in contributing an article or a note about the College's special collections or its history for the College's scholarly e-journal, *New College Notes* (ISSN 2517-6935), are also invited to **contact the Librarian**.

4.1.9 Internet and Technology Services

All rooms in College have ethernet access. This connection can be activated by plugging in your computer into the provided router (Make sure the PoE connector is connected to the wall. You can disconnect the other cable from the wall and plug in your own computer), opening your internet browser and following the automated security program. There is also Wi-Fi in the Spoom, Weston Buildings, JCR and Library via "NewcWifi". The New College IT manager will email you the password. Alternatively, you can connect to "eduroam" **using your Oxford credentials**. IT services are continually working to improve wireless internet connectivity throughout the College.

There is a computer and printer in the MCR TV room. There are also printers in the College Library. Printing is charged to your Battels.

All College members will have a college e-mail address. Your address will be in the form *firstname.surname@new.ox.ac.uk*. You will almost certainly have a second one in your department but (with a few exceptions) they all go to the same account. There will be details of how to set up your account in your pidge soon after you arrive. There is a webmail interface, but the account is easy to configure for an e-mail client. See: <https://www.ox.ac.uk/students/life/it/email>

4.1.10 Chapel

The chapel welcomes all College members to its services, which take place during the eight weeks of each university term. We hope the chapel will be a place where anyone can find community, inspiration in words and music, and calm during busy weeks. Services follow the pattern of the Anglican church: the music is sung by the chapel choir, which has an international reputation, and the liturgy is formal to fit in with the building and the music, but aims to be as inclusive as possible and to focus on issues in the wider world. Any College member is welcome to get involved in chapel life - as readers, servers, and chapel wardens.

Services are held at 6.15 pm from Monday to Saturday (except for Wednesdays when there is no service) and on Sundays at 6.00 pm. Advent and Christmas Carol Services are held on the Sundays of 8th week and 9th week of Michaelmas Term, so watch out for announcements about tickets.

The beautiful chapel is also close to the scenic cloisters, a favourite spot of many for its peaceful, shaded ambience. The scene in Harry Potter and the Goblet of Fire where Draco Malfoy is turned into a ferret was filmed in the cloisters here.

All information about the chapel may be found on the termly chapel card copies in pigeon holes and on the chapel and lodge notice boards and on the chapel page of the College website (<https://www.new.ox.ac.uk/chapel>), and the choir website (www.newcollegechoir.com).

4.1.11 The Gardens

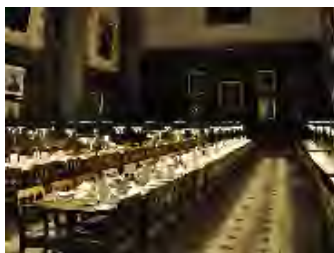
New College has some beautiful gardens, which are the responsibility of the Garden Fellow, Robin Lane Fox. Nobody is permitted to walk on the grass in the Front Quad, but all other areas may be used by students. Croquet may be played in the Holywell Quad, but no other ball games are allowed. The main gardens are surrounded by the city walls and contain a decorative *Mound*. Do not climb, or let your guests climb, the city walls: this is a serious College offence!

4.1.12 College tower

There is an old bell tower in the College which can be visited for free by New College students and up to 5 guests. It is open during daytime when the weather is good. The entrance to it is located in the cloisters, and the key can be obtained from the Porter's Lodge.

4.1.13 Chalet

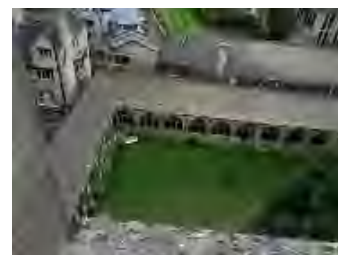
During your time at New College, please take advantage of our chalet in the French Alps. With Balliol College and University College, we share an historic property near Mont Blanc, which in 2009 celebrated its 100th birthday following its reconstruction after the original 1865 chalet was accidentally



The College hall



The *chalet des anglais*



The cloisters from New College tower

burnt down in 1906. Each summer, two or three groups from New College spend 10 days reading and walking in one of the most beautiful parts of Europe. All members of the College are welcome. Groups are normally a mix of undergraduates and postgraduates with a few members of the SCR. The trip is very inexpensive (usually less than £5 per day), and travel by air through Geneva or on the sleeper train from Paris is easy. For more information, please consult the College page on the chalet (<http://www.new.ox.ac.uk/new-College-chalet>) or contact Dr. Will Poole (william.poole@new.ox.ac.uk).

4.1.14 Pigeon hole

You will be given a pigeon hole, referred to as your *pidge*, in the post room by the porters' lodge. This is where you collect your mail, both internal and external. Your address will be:

Yourname,
New College,
Holywell Street,
Oxford,
OX1 3BN,
UK.

You can send post internally across the university by dropping it in at the porters' lodge. There is a postbox for external mail under the Holywell arch and the closest place to buy stamps is the Tuck Shop on Holywell Street.

4.1.15 Laundry

If you live at Weston Buildings, you can find three washing machines and three dryers in the laundry building located near 16 Weston Building. The machines only accept card (not bod-card) payments. You can check their status live at <https://wa.sqinsights.com/1314802?room=8783>.

4.2 The University

4.2.1 Libraries

Oxford has numerous different libraries. As a student, you are a reader at the famous Bodleian and the associated Radcliffe Science Library. There might also be a library in your department. Most of the academic libraries in Oxford are part of the Bodleian Libraries system. See: <http://www.bodleian.ox.ac.uk/>.

4.2.2 Sports facilities

The University's main sports facilities are located a 10 minute walk from College on Iffley Road. This site has a gym (free to New College students, excellent swimming pool (£88/year), running track (where Roger Bannister ran the first four minute mile), tennis courts, squash courts, sports hall, indoor cricket nets and a number of other facilities. There is also a wide range of university sports teams. Find out about these either online (www.sport.ox.ac.uk) or sign-up at the Freshers' Fair during Freshers' Week.

4.2.3 Students union - OUSU

Oxford students are also represented by the student union, headquartered on Worcester Street. They are a useful source of information on a number of topics; check <https://www.oxfordsu.org/> for more information.

4.2.4 The Oxford Union


The Oxford Union is not a student union and is in fact a student run debate club. The Union runs many good events and attracts famous speakers (some notable speakers include: Theresa May, Malcom X, Bill Clinton, Judi Dench, Emma Watson, W. B. Yeats and Manny Pacquiao). We strongly encourage you to talk to many other MCR members (many of whom are Union members) before deciding to get a membership. During Freshers' Fortnight it is open to all, so check it out then even if you do not choose to join. The building is on St. Michael's Street. See: <https://www.oxford-union.org/>

4.2.5 The University Club

The University Club is open to all graduate students and staff of the university. It is located near to New College on Mansfield Road. The good news is that basic membership is free. It has a bar, lots of screens to watch sport on, gym facilities, a small astro-turf and a playing field. It also has football and cricket teams which several New College graduate students are involved in. See: www.club.ox.ac.uk

4.2.6 The Careers Service

The University Careers Service, located at 56 Banbury Road, is the main resource for what happens after you leave Oxford. Whether it is landing an internship or job, applying for postgraduate study or a postdoc anywhere in the world, or just going to a Careers Fair to get free stuff, it is recommended to register with them on their website: www.careers.ox.ac.uk to be able to access the range of advice and information. The Director of the Careers Service, incidentally, is a member of the New College SCR (Jonathan Black).



- Freshers' Fortnight
- Guest night
- End-of-year garden party
- Exchange dinners
- Brunch
- Bar nights
- Bops
- Other events

5. MCR social life

5.1 Freshers' Fortnight

One of the most important things that the MCR does is provide two weeks of entertainment and orientation for you. Details will be published when you arrive (both through WhatsApp, email and posted around accommodation).

Matriculation, a ceremony where you formally become part of the University, occurs at the end of the first week of Michaelmas term/end of the freshers' fortnight. You may not re-matriculate if you have already matriculated at Oxford for a previous course. Under an ancient agreement, graduate students of Cambridge University and Trinity College, Dublin are permitted to incorporate their Cambridge or Trinity College, Dublin degrees, so long as they are pursuing a prescribed course of study at Oxford University. If you fall into this category, and would like to incorporate, please send a copy of your graduation certificate to Felicity Reeves in the Academic Office. (student.services@new.ox.ac.uk)

5.2 Guest night

Our main regular social events are *guest nights*. MCR guest nights happen every second Friday of odd weeks, bringing the total to four a term. Dinner is usually of a very high standard and costs around £22 for students, and £30 for guests. Members may invite up to two guests to join them, although many prefer to enjoy the evening with friends from College. Dress is smart, but gowns are not required. After dinner, there is second dessert provided by the MCR which include a selection of cheeses, fruit, chocolate and port, as well as the bar being open. Everyone is welcome to come to second desserts even if you didn't attend the dinner. Guest nights are very popular and you need to sign-up early on food.new.ox.ac.uk to avoid disappointment. Sign-ups start a week early: usually around noon on the preceding Thursday.

5.3 End-of-year garden party

At the end of Trinity term the MCR holds an end-of-year party to say goodbye to the many people leaving Oxford. Enjoy bouncy castles, music, sun (hopefully!), games, Pimm's, amazing food and other summer delights taking you from the day to dancing at night!

5.4 Exchange dinners

We have *exchanges* with other colleges, whereby we host them at New College for drinks and dinner and then they do the same for us. Drinks and second dessert are included. These events vary between being



(a) A brunch in the Spoom



(b) Enjoying the bouncy castle at the garden party

a special dinner with high table food or occurring during regular formal dinners. We also sometimes have bar exchanges and wine and cheese exchanges, which provide an opportunity to mingle and drink lots without having to commit to sitting next to anyone, keep an eye on the MCR WhatsApp groupchat and the mailing list!

5.5 Brunch

During term, you can get brunch in hall for free every other Sunday, funded by the MCR. This is a good way to catch up with friends and meet new people.

5.6 Bar nights

The MCR operates a student-run bar in the Spoom. It's usually open between 19.30-23.00 on Wednesdays and Saturdays during term time and as often as possible outside of term time. It is run by our Bar Rep and manned by committee members as well as volunteers from the MCR community. Volunteering at the MCR bar is a great way to get involved and an easy way to get to know a lot of the people in the MCR. At times, the MCR runs themed bar nights, with special drinks or activities offered!

Drinks here are cheaper than the main College bar and much cheaper than in town. The bar caters to all tastes and has plenty of choice when it comes to both alcoholic and non-alcoholic drinks – and if you feel like something is missing from the assortment just get in touch with our Bar Rep. Whether you are getting ready for a big night out or are looking for a quiet evening, feel free to come around!



(a) Bar staffed with two volunteers



(b) Outdoor seating on sports field



(a) The bar in its active state.



(b) Christmas bop



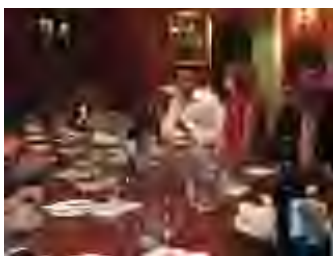
(c) Themed guest night: Masquerade

5.7 Bops

Bops are the highlight of the MCR party scene. Around twice a term the MCR will throw parties with a fun theme in the Spoom. MCR members take turn DJing at the bops, so make sure to email our social secretaries if you are interested. Other colleges also host their own Bops located on their grounds, which you are welcome to attend if advertised.

5.8 Other events

The MCR puts on several other events during the term in addition to the regulars. These include film nights, a charity auction, orchestral concert trips, MCR quizzes, a play, sports days, cheese and wine tasting, cocktail making masterclasses, BBQs and an Easter egg hunt. These occur throughout term, so keep an eye on the MCR mailing list and WhatsApp group for adverts.



(a) Cheese and Wine tasting



(b) Freshers' Week Pub Crawl



(c) Guest night

6. Accommodation

The majority of New College graduate students are housed in College accommodation at the Weston Buildings for their first year of graduate study with a reasonable chance of receiving second year housing. New College graduates receive some of the most desirable accommodation facilities that are provided for students living in Oxford. Accommodation costs approximately £855 monthly (daily rate is around £28.50) including utilities and network.

6.1 Weston Buildings

The Weston Buildings are located alongside a branch of the River Cherwell at the College Sports Ground, which is a short walk from the main College site. The buildings provide around 90 rooms for graduate students, which are divided into 16 houses of (usually) 6 rooms each. The rooms are modern, have a sink, and are well proportioned. Each house has a large self-catered kitchen with a patio area, four toilets, and three shower rooms. Laundry facilities are located in a small building opposite of House 16.

6.2 Castle Mill

Castle Mill is a University accommodation complex situated in central west Oxford close to the Railway Station, which is a ten-minute bike ride from College and many research buildings of the University. Each of the bedrooms earmarked for New College has en-suite bathroom facilities with a kitchen and dining room that is shared between four to six students on each floor. There are four washing machines and tumble dryers available on site.




Fig. 6.1: The Weston complex (left) and Castle Mill (right) accommodation sites.

The scouts tidy communal areas (kitchen, bathrooms) each weekday, but as of 2022, no longer clean individual rooms on a weekly basis. It is usual to tip your scout either at Christmas or when you leave at the end of the academic year. The scouts are an integral part of College life so please do not hesitate to introduce yourself when they come by.

The College housing regulations state that graduates may invite guests to stay in their rooms, but only for a maximum of two nights at a time. Alternatively, students can book one of the JCR single or double guest rooms, which are available very cheaply. If you wish to book one of these rooms please contact the Assistant Home Bursar (emily.meeson@new.ox.ac.uk), but arrange this well in advance since these rooms are very popular during each term. All accommodation-related rules and the license agreement can be found in the dean's handbook.

All College owned graduate rooms are single study bedrooms that have a wealth of facilities including desk spaces, lamps, bookshelves, WiFi, Ethernet connection, and heating. Rooms will have standard UK 3-pin 230 V electrical sockets as well as 2-pin 110 V and 240 V sockets for electric razors near the basins.



Bod-card
Room key
E-mail lists
Things to bring
Town
Shops
Gowns and academic dress
Terms
Bicycles
Transportation

7. Arrival and Settling In

7.1 Bod-card

Your Bodleian reader card, always referred to as your *Bod-card*, is effectively your University student card. You need it to get into University and College buildings, buy food in hall, drinks in the bar and to get into most buildings and departments across the University. The first thing to do when you arrive is collect your Bod card from the graduate office in 4OB3 (you can ask at the Porter's Lodge for directions) as soon as you arrive.

7.2 Room key

Once you have your Bod card you can go to the main Porters' Lodge, next to the Holywell Street entrance to New College, where the porters will tell you where you will be living and where you collect your room key.

7.3 E-mail lists

E-mail is the standard form of communication within the university, and you should check your account regularly. You must activate your College email address as soon as possible after arrival. There are two e-mail lists at New College which you need to know about:

1. Main list: The main list is run by College and important information is sent out using it. E-mails come through with the subject line [*new-mcr*]. College should sign you up to it but inevitably they miss a few people. If you don't seem to receive any e-mails with this subject, report it to the College IT support (helpdesk@new.ox.ac.uk), because you need to be on this list.
2. Social list: This list is administered by the MCR Social Secretary and has subject line [*newmcr-l*]. It is used by the president, vice-president, social secretaries, welfare rep and sports rep for sending out notices and information about what is happening in the MCR. We will try to add you automatically, but a lot of people don't get signed up, so you should do this yourself. E-mail newmcr-l-subscribe@maillist.ox.ac.uk from any e-mail account to be added to the list. In order to unsubscribe you can e-mail newmcr-l-unsubscribe@maillist.ox.ac.uk.

7.4 Things to bring

For your room: Extension cords and multi-plugs are a good idea, given the rather quaint notions the College holds about electricity. Transformers which convert cycles as well as volts will also be needed for any electrical goods purchased overseas. It also might be worthwhile to bring

transformers and conversion plugs. College does not provide pillows, sheets and duvets for the beds, so remember these or you'll be turning your clothes into a make-shift pillow on the first night.

If you are an international student looking to purchase items for your room, stores like Argos, ASDA, TK maxx generally provide cheaper options for furnishing, while stores such as Marks and Spencer and John Lewis have slightly more expensive options. Alternatively, you can order items online (i.e. through Amazon) for your arrival.

For the kitchen: New College does not provide plates, bowls, mugs, glasses, cutlery and storage containers for the kitchen, though in much of College's accommodation a collection has accrued over the years. College accommodation kitchens DO come furnished with a microwave, a toaster and a kettle. You may also find sandwich toasters, rice cookers, bottle openers and the like can be especially handy, but your house-mates may be happy to share what they have, so do check before you spend! Some general goods stores in Oxford offer discounts on all home-ware purchases in the first few weeks of term on presentation of your Bod card. Robert Dyas is a good bet as they do a year-round student discount.

Clothes: Despite the impression given by the photos in this guide, the weather is not always sunny. So, apart from the required academic dress (see below), perhaps the most important items to remember are warm clothes for the winter and coats that will keep you dry. The weather in Oxford typically ranges from 0-10°C in Winter and 10-25°C in Summer.

Additionally, there will be a series of formal occasions when the College serves up its finest cuisine, and many more optional black tie events besides, suits and dresses will be useful.

7.5 Town

Oxford has a large non-student population and there is a lot going on outside of the University. The following list barely scratches the surface of what you can do. www.dailyinfo.co.uk is a good source of information on what is going on around the city.

7.6 Shops

Here it a list of some shops in Oxford and the nice things you can get there.

Tesco and Sainsbury Major supermarkets/grocery stores. There are several scattered throughout the city. There is a fairly large Tesco in the town centre and a small Sainsbury's next to it. Additionally, there is a large Sainsbury's located in the Westgate mall. There is also a large Tesco located on Cowley street.

Waitrose and Marks & Spencer More upscale supermarkets, groceries here will cost more but, in theory, be of higher quality.

Tahmud Store 53 Cowley Road. Middle Eastern grocery store. Good for bulk purchases of spices, rice, lentils and other staples.

Seoul Plaza 59-63 Cowley Road, Korean supermarket good for Asian food.

Cycle King Oxford 128 Cowley Rd. Bicycle shop, cheaper than the ones in the city.

7.6.1 Sporting clubs

As well as University clubs, there are many town sports clubs. These are often more expensive than university clubs, but some have better facilities and they will have a different atmosphere. Many graduate students sign up for gym facilities which are not part of the university such as [Buzz Gym](#) and [Pure Gym](#).

7.6.2 Bars, Pubs and Clubs

Oxford has a fantastic selection of pubs and bars. Sadly, few pubs are open past 11 pm (the traditional closing time for pubs in the UK). Options favoured by members of the MCR have historically been Turf Tavern and King's Arms as the closest pubs to college. Other great options are: The Half Moon (also known as 'shmoon') which is open till 3am some nights; The Star has one of the nicest pub gardens in Oxford; whilst The Four Candles is our local Wetherspoons which serves cheap drinks but has very little else going for it. The MCR committee will do its best to familiarise you with some of these during Freshers' Fortnight.

There are also some nightclubs in Oxford. Many of these are very student-centric during term-time. London is also only an hour away and there are excellent bus and train links.

7.7 Gowns and academic dress

One of the classic images of Oxford is students going around in gowns and academic dress. You will need a gown for your matriculation ceremony, dining at formal hall and various other occasions in College. For formal dinners at New College, the gown can simply be worn over normal clothes.

You need full academic dress, called *subfusc*, for formal university events such as matriculation, university exams and research degree vivas as well as for graduation. This is specific clothing that is worn underneath your gown.

- *one of*:
 - dark suit with dark socks, or
 - dark skirt with black tights and stockings, or
 - dark trousers with dark socks or dark hosiery
- dark coat if required
- black shoes
- plain white collared shirt or blouse
- white bow tie, black bow tie, black full-length tie, or black ribbon

You also need a mortarboard or the less common soft cap. The soft was traditionally worn by women. The white bow tie is the traditional option for men, though in 2013 the black bow tie and straight black full-length tie became legitimate alternatives. It was also in 2013 that the *subfusc* regulations were made non-gender specific, see <https://www.ox.ac.uk/students/academic/dress> for more info.

There are outfitters around town (Shepherd & Woodward, Walter's) who provide a gown, mortarboard and white bow tie/black ribbon, usually as some part of package deal (for around £25) in the first couple of weeks of term. Additionally, you can usually buy used gowns and mortar boards from leaving students through Facebook or GumTree. We recommend getting your *subfusc* as soon as possible as you will need it for matriculation, which takes place on the Saturday after the first week of classes.



Fig. 7.1: Oxford natives in traditional costumes



Fig. 7.2: *EVERYTHING* in Oxford is done in *subfusc* and gown!

7.8 Terms

Oxford has three terms: Michaelmas from October to December; Hilary from January to March; Trinity from April to June. Terms formally last eight weeks: weeks 'start' on Sunday and are numbered from one through to eight. Thus, within Oxford, you tend to describe dates using this system: so, for example,

you might say, *my exam is on Tuesday of 7th week*. The week before first is called 0th week and the one before that minus 1st week etc. The gaps between terms are the *Christmas, Easter* and *Long* vacations.

Undergraduate teaching takes place during weeks of full term. For those doing taught courses, teaching will be focused during term but you may well have to do assignments out of term: so check this before you book a six week holiday in the Easter vacation! For research students terms are less relevant, and what time you get away is largely up to you and your supervisor.

7.9 Bicycles

Some people cannot live without their bike in Oxford, whilst others get by fine without one. A lot depends on your lifestyle, particularly the distance between your accommodation and where you will be spending most of your time working (department/lab/favourite library). Buying a new bike in Oxford can be expensive but due to the high bike-to-person ratio there is a large second-hand market. The *DailyInfo* website is a good place to start looking (as are the usual websites such as Gumtree), and you should expect to pay more than £50. Another handy website is *Oxfords Reconditioned Bicycles*, where you can acquire a bike with all the specific features you may want. The MCR facebook group is also an excellent place to look for someone selling their old bike. Bike theft is the most common crime committed against Oxford students, so a high-quality D-lock is essential. A high end bike repair kit is available from the Weston lodge and maintained by our bike rep. If you buy a bike make sure to **register it** at the porters' lodge! The porters occasionally go around Weston Buildings and remove unregistered bikes.

Never ridden a bicycle before? The University offers up to 6 hours of free biking lessons for total beginners. Take a look [here](#).

7.9.1 MCR Bike Share Program

If you only need a bike in the immediate/very short term then the MCR owns a couple bikes that you can borrow. You have to register beforehand (only the first time) by filling out this form: <https://forms.office.com/r/Amnk9GHMAE>. Then you will be able to borrow a bike whenever you want! Contact the Bike Rep if you have any questions about the process.

7.10 Transportation

7.10.1 Buses

The public transport system in and around Oxford relies mainly on the *Oxford Bus Company* buses. Tickets can be purchased from the driver and you can pay with change or by card. There is a coach service called *Oxford Tube* which goes between Oxford's central bus station at Gloucester Green and London Victoria Station. Coach buses are long distance buses which can take you between cities. You can buy a *Coachcard* to save 33% on all fares.

7.10.2 Trains

The main connections to London are by road or rail. By rail, *First Great Western* offers the service connecting Oxford to London Paddington, and *Chiltern Railways* between Oxford and London Marylebone. All options offer various fares depending on booking date, return date, number of tickets bought, etc. Some aggregated search websites such as nationalrail.co.uk and [The Trainline](http://TheTrainline) let you book tickets across multiple train companies. If you plan to take the train a lot make sure to get a Railcard and save 33% off all tickets. University students can get a *16-25 Railcard* for 3 years. It's important to note that there are lots of train strikes going on throughout the year so if you are ever planning on using the trains make sure to check online.

7.10.3 Airports

Luton and Stansted airports can be reached by bus via *National Express*, and Heathrow and Gatwick airports via the *Airline*, a bus operated by the Oxford Bus Company. Tickets for all of them can be bought via the *National Express page*, or the Airline tickets also via the *Airline page*. Fares vary depending on time of day, advance booking, return dates and other more mysterious criteria.

8. Finances

Everything to do with money in College is in some way connected to the Bursary, located on the ground floor of staircase 4OB. It is open weekdays between 9.30 am and 12.30 pm, and again between 2.15 pm and 3.30 pm. This is where you can go to pick up grant cheques and other such payments. You can also go here to pay your battels at the beginning of each term and to add money to your till account (Bod card), although these processes are more easily done online via <https://newmeals.new.ox.ac.uk/sso/Main.aspx>. You can also make payments through the golden letterbox in the wall, even when the Bursary is not open. If you have issues with payments, you can contact Linda Goodsell (linda.goodsell@new.ox.ac.uk) or visit during opening hours. Bear in mind that the Bursary is extremely busy in the first few weeks of term.

8.1 Battels

Have you been skipping over sentences with the word *battels* in them? If so, then this paragraph is for you. Battels are your bill for accommodation, dinners and other little things, such as some MCR events; you have to pay it at the start of each term. Accommodation is paid in advance at the beginning of the term, but dinners and other small expenses are not charged until the beginning of the next term. Your battels will be e-mailed to you, generally in 0th week of term. It is usually possible to negotiate a short extension to the payment deadline if it's necessary. Any Junior Member who has an outstanding battels debt at Noon on the Friday of 1st Week, and who has not seen the Bursar or emailed the Bursary to agree a timetable for settlement of this debt, will be required to pay an administrative charge of £5 and will be barred from further credit facilities within College. Further payments will be imposed if Battels are still outstanding at Noon on Friday of 2nd Week. Battels can be paid in person at the bursary or online with your debit card (or credit card at a 1.92% surcharge) via <https://newmeals.new.ox.ac.uk/>.

8.2 Till account

This is the account you use to pay for food in hall and drinks in the College bar, which you do with your Bod-card. You *CANNOT* go in debt in the College and MCR bars, unlike in Hall where you can go in debt for breakfast and lunch up to £15: this debt will be added to your next Battels. The easiest way top up your account is online using the <https://newmeals.new.ox.ac.uk/sso/Main.aspx> website and your debit card, however, you can also pay by cheque to the bursary.

8.3 Travel grants, hardship grants and bursaries

8.3.1 College Grants

College has a research fund for graduate students. This is primarily for necessary travel (e.g. conference attendance/archival visits), but some purchases (e.g. essential software) will be considered on their merits. Taught master's students can get up to £200 and research students can get £375 per year (and this can accrue if not used). Medics on Electives can apply for special travel grants: £750 per year for placement outside the U.K. Forms are on the College website at www.new.ox.ac.uk/scholarships.

There are numerous other funds for various things, particularly sport and other *meritorious* activities. For example, the College has an allocated fund for student sporting and cultural activities, including charity and voluntary work, funded by donations from old members. All members of the JCR and MCR are eligible to apply for an award of up to £300 each term towards costs incurred through participation in an extracurricular activity whilst at New College. You will receive emails about this.

There are some additional bursaries and small pots of money which may be available. A list of these is on the College website at www.new.ox.ac.uk/scholarships. You can apply for them via the Bursar, David Palfreyman (bursar@new.ox.ac.uk)

8.3.2 Hardship

If, and only if, your circumstances change adversely after you get to Oxford, then you are eligible for a hardship grant from The College Financial Aid Committee. Make an appointment with the bursar, who is usually very helpful if you are in genuine need.

In addition to the College hardship fund, in 2020 the MCR committee launched a new initiative: the MCR Solidarity Fund. This is a student-funded project which aims to support MCR members who are experiencing serious or continued financial distress. The fund allocates small subsidies between £5 and £80 with two goals: providing quick, easily accessible relief for students who are struggling financially due to unexpected expenses (i.e. unforeseen medical bills, sudden device failure, etc), and to mitigate the chronic exclusion of low-income and underprivileged students from college community life (i.e. by subsidising participation to formals and Guest Nights, purchase of college stash, etc).

Outside of New College, those experiencing unexpected financial difficulties can also apply to the University Hardship Fund (<http://www.ox.ac.uk/students/fees-funding/assistance/hardship/uhf>) by the fourth week of each term. UK students can also apply to the Access to Learning Fund (<https://www.ox.ac.uk/students/fees-funding/assistance/hardship/alf?wssl=1>). The University website has further information on possible sources of financial support at www.ox.ac.uk/students/fees-funding?wssl=1 and OUSU offers an advice service (advice@ousu.org).

8.4 Working

You are primarily in Oxford to study and your supervisors will expect you to spend most of your time learning or doing research. However, there are opportunities to do part-time work. There are part-time opportunities in town, shifts in the College library, etc.

There are also teaching opportunities, although you are not required to teach, and nobody is guaranteed as a student to have the opportunity to teach. Graduate students can take undergraduate tutorials and some may even be appointed to *college lectureships*. Scientists also have the opportunity to demonstrate in practical sessions. Talk to your supervisor if you are interested in teaching.

9. Welfare

If you are a member of New College and need any welfare support, please do not hesitate to reach out to any of the members on the Welfare team with whom you feel comfortable. A separate document with all MCR welfare information is available [here](#).

9.1 LGBTQ+ students

There is a lot going on at Oxford for everyone who identifies as LGBTQ+. New College may date from 1379 and the University from about 200 years before that, but you'll find that attitudes have moved on a long way since then! The MCR prides itself on our acceptance of diversity and a lovely LGBTQ+ community will be here to welcome you. There are LGBTQ+ students in the New College MCR, town and University, so there will be plenty of friendly faces to show you the sights and give you all the insiders' tips. Whether prospective or current New College student, whatever your gender identity, expression and/or orientation, you can get in touch with your LGBTQ+ representative on the MCR committee. The LGBTQ+ rep, during term organises events open to all MCR members who identify as LGBTQ+, keeps you up to date with what's happening across the University and is always approachable for confidential one-on-one talks or to answer your questions about LGBTQ+ life at New College.

If you would feel more comfortable talking to a senior college member instead, the New College Welfare Team is always a good first point of contact available to all students. More info can be found on the Health and Welfare page (<https://www.new.ox.ac.uk/health-welfare>). Oxford University LGBTQ+ Society (<http://oulgbtsoc.com>) also has heaps of info on their website, and is a great group to join with lots of fun social events. Keep your eyes out for the OUSU LGBTQ+ handbook! More information on freshers' events outside College will be available on Freshers' Fortnight.

Immediate Support Contacts	Telephone and e-mail
Main Porters' Lodge (24 hours, 7 days a week)	01865 279500
Weston Porters' Lodge (Weekdays and Saturdays)	01865 281081
Emergency Services	999
(Let the Porters know if you call an ambulance)	

Table 9.1: Immediate Contacts

MCR Welfare Team	e-mail
MCR Welfare officers	<i>mcr.welfare@new.ox.ac.uk</i>

Table 9.2: MCR Welfare Team

9.2 Contacts

College provides a constellation of people attuned to all manner of welfare matters. In summary, the welfare team is made up of a range of MCR members, as well as members of College, who all work together to offer welfare support for any New College member in need. From the MCR, there are two welfare officers, as well as the MCR peer supporters, who are all trained to listen and support anyone and are a great first point of contact regarding any welfare matters. Working with and alongside the MCR welfare team, College also have a fully established welfare team, who are comprised of the Cox Fellow, the Chaplain, the Dean, and the Junior Deans.

In an **emergency** you should contact the **Porters' Lodge** and they can assist you with getting in touch with any of the members of the welfare team straight away.

9.2.1 MCR Welfare support

The MCR committee has two elected welfare officers who can refer students to the right people for advice and guidance.

MCR welfare officer

If you would like to get into contact with a friendly and approachable person from the MCR community about any welfare concerns, Emily Hudson and Belle Rockett are your MCR welfare officers. They are here to talk, or listen and support you. They are contactable by email on: *mcr.welfare@new.ox.ac.uk*.

9.2.2 College welfare support

Tutor for Welfare

The College has appointed Jonathan Black, a senior member of the College, as the Tutor for Welfare. His role is to oversee the provision of student support within the College. Email: *jonathan.black@new.ox.ac.uk*. Jonathan works with an experienced College welfare team. This team is available to listen to student concerns and offer support. Graduates can contact the Welfare team - contact details below. However, please note that we are unable to discuss welfare issues with parents or guardians.

The Cox and Salvesen Fellows

Tom Metcalf and Bethany Dubow, the Cox and Salvesen Fellows, are happy to talk to all New College students and are a good first port of call for information about services and support available within College and the university. More information can be found [here](#).

The Academic Registrar

Freyja Madsen is available to chat to students about personal matters, support for disabled students, suspension, or any other academic concerns. They are a first point of contact for all students and is available during office hours - drop into her room (4 OB 5).

The Student Welfare and Staff Support Officer

Milly Gray is available to chat to students and talk about personal matters or concerns around life in College and is available during office hours - drop into her room (4 OB 5). She can be reached at 01865 (2)79241 or email *camilla.gray@new.ox.ac.uk*.

Chaplaincy

Chaplain & Dean of Divinity, Erica Longfellow, and Assistant Chaplain, Susan Bridge, are both experienced in pastoral listening and support in secular and religious contexts. They are available to listen to any member of college. They won't talk about religion unless you do.

New College Welfare Team	Telephone and e-mail
Tutor for Welfare: Jonathan Black	01865 284632 Mobile:+44 7776 185415 <i>jonathan.black@new.ox.ac.uk</i>
The Cox and Salvesen Fellows: Tom Metcalf & Bethany Dubow	Via Porters Lodge: 01865 (2)79555 <i>welfare@new.ox.ac.uk</i>
The Academic Registrar: Freyja Madsen	Via Porters Lodge: 01865 (2)79596 <i>tuition@new.ox.ac.uk</i>
Chaplain & Dean of Divinity: Erica Longfellow	01865 279451 <i>erica.longfellow@new.ox.ac.uk</i>
Assistant Chaplain Susan Bridge:	01865 289081 <i>susan.bridge@theology.ox.ac.uk</i>
College Nurse:	Via Porters Lodge: 01865 (2)79596 <i>new.nurse@nhs.net</i>
Out of Hours GP Service	111

Table 9.3: New College Welfare Team

Advisor to the Welfare Team

As former Director of Student Welfare and Support Services, Elsa Bell provides guidance and advice to the Welfare Team. To get in touch with Elsa, please email welfare@new.ox.ac.uk or contact her through the porters lodge.

College Nurse

New College students have access to a drop-in clinic on-site, located at 1 New Buildings. In addition to offering advice and support on minor illness and minor injuries, the College Nurse is able to offer advice and provide supplementary support for those experiencing issues affecting their mental health. They can be reached at new.nurse@nhs.net.

Surgery hours:

- Monday: 09.45-12.15
- Tuesday: 09.45-12.15 13.00-15.00
- Wednesday: 09.45-12.15
- Thursday: CLOSED
- Friday 09.45 -12.15 13.00-15.00

Other Useful Welfare Contacts	Telephone and e-mail
Nightline (8 pm-8 am, 0th-9th week)	01865 270270
University Counselling Service	01865 270300 <i>reception@counserv.ox.ac.uk</i>
Samaritans 24hr (listening in a crisis)	08457 909090
Student Advice Service	<i>advice@ousu.org</i>
Emergency	999

Table 9.4: Welfare Contacts

Decanal Team

The New College Dean, Michael Burden, is in charge of the discipline of the College's Junior Members (including the MCR members). The role is wide-ranging, and although it excludes individual pastoral matters, it does take account of the general welfare of Junior Members. Information for the members on the Decanal team, can be found <https://www.new.ox.ac.uk/decanal-team>.

9.3 Additional Welfare Resources that may be Useful

Next to our own team of trained peer supporters, you may feel more comfortable speaking to a Peer of Colour, Rainbow Peer, Disability Diversity Peer, or a Peer of Faith who are peer support trained students within the university. They all can be contacted at peersupport@admin.ox.ac.uk and more information can be found at <https://www.ox.ac.uk/students/welfare/peersupport/finding-peer-supporter>.

9.4 Doctors

Occasionally we all get ill and need to go visit the doctors. During term and out of term the doctors can be found in their practice at Northgate Health Centre. Your medical registration will occur during the 1st week of Michaelmas term, after which you will have access to the College doctors. Information about the registration procedure will be given by the College during the Freshers' Week.

The College Doctors, Dr Matthew Easdale and Dr Rachel Allan, have agreed to accept any member of the College who is resident in the UK for longer than 6 months as an NHS patient. Their practice is at Northgate Health centre (01865 311811; <https://www.northgatehealthcentre.co.uk/>). Read more about going to the doctors [here](#).

9.4.1 Overseas students and visiting students

All overseas students who are studying here for more than 6 months can register and have access to the UK National Health Services (NHS). You may be required to pay an NHS surcharge as part of your visa application. Once you arrive in Oxford you will also be required to register with the College doctors. It is particularly important that overseas students register with the College doctor **as soon as possible**. Please note: you will not be able to register if you have less than 6 months of your course left.

Visiting students on courses longer than 6 months are eligible for NHS treatment (please see above for details). Those in Oxford for a course less than 6 months (in effect, less than 3 terms of study) will not be eligible for medical treatment under the NHS, and are required to make arrangements for private medical insurance before arriving in the UK. You should make an appointment to see the College Doctor, who may be able to offer special private terms, but will be unable to offer consultation or treatment within the National Health Service unless your usual country of residence has a reciprocal health agreement with the UK.

For more information on charges for NHS treatment and exemptions for people visiting the UK, see the Department of Health's website for [overseas visitors](#).

9.4.2 Dentists

There are two NHS dentists that are known to take on students: Studental (located at Oxford Brookes University in Headington; telephone: 01865 689997, email: reception@studental.co.uk) and Bupa Dental Care Oxford (22 Beaumont Street, Oxford, OX1 2NA; telephone: 01865 243702; email: reception.oxford@oasis-healthcare.com).

10. Information for Overseas Students

The University welcomes some of the brightest minds from across the globe to study at Oxford every year. International students make up over a third of all those studying at the University, with 138 nationalities currently represented. The university has a comprehensive guide for new coming international students [here](#). Below is some additional information which the university's guide does not cover.

10.1 Money

The currency in the UK is Pounds Sterling £, sometimes abbreviated to GBP (Great British Pound). Bureau de Change counters are available in every bank for converting currencies. On Queen Street there is an American Express office and a Marks and Spencer which offer a currency exchange, as does the exchange service at the tourist information on Broad Street.

10.2 Banking

Opening an account in the UK is surprisingly difficult for foreign students. This is particularly true for an accounts with the major banks. Recently however several online-only banks have started up and they are much easier to open accounts with. To save money, it is recommended to open a UK bank account as quickly as possible.

10.2.1 Online Only Banking

Monzo

International students can open an account with Monzo immediately upon arrival by taking a photograph of their passport and visa. You can transfer money to your account right away and start paying with GBP in a few days. Monzo is a fully regulated bank in the UK and will issue you a contactless debit card. You will even be able to withdraw cash at ATMs. See Monzo's website [here](#).

Revolut

Revolut is an online only payment system and not officially a bank. They are however regulated and will allow you to pay in GBP from your local currency quickly and easily. You can request a contactless card to be shipped to you in Oxford. See Revolut's website [here](#).

10.2.2 Major Banks

While there is more security in opening a bank account with one of the major banks, the process can take between weeks and months. Many overseas students have found it difficult, costly, and time-consuming to access funds from their home countries while waiting to open an account at a major UK bank. It might be a good idea to use an online-only in addition to a major bank to start paying in GBP quickly.

If you don't want to use an online bank then ideally, arrange to arrive in the UK with a certified cheque issued by your home bank already in Pounds Sterling for however much of your money you wish to have available here. Most ATMs accept overseas debit cards, allowing you to withdraw cash from your account back home, but your bank will usually charge you for this. Credit cards are similarly useful, although the fees and interest costs are potentially prohibitive. There is also a policy of not issuing international students with a UK credit card until they have been in the UK for at least 6 months. You can arrange with the New College Bursary to pay your fees by international wire transfer. Information on this process will be sent to you with your bill each time it is due.

To open a traditional bank account we recommend visiting the bank of your choice to set up an appointment as soon as you arrive; alternatively, it may be worth calling ahead to request an appointment. With all the freshers arriving it can take up to a month to get an appointment to set up a bank account! If you're unsure of which bank you want to use, many of the banks will have stalls at the International Students' Orientation with exact descriptions of their current requirements.

The following major UK banks have branches in central Oxford:

- **Barclays:** 54 Cornmarket Street
- **The Cooperative Bank:** 13 New Road
- **Halifax:** 22 Queen Street
- **HSBC:** 65 Cornmarket Street
- **Lloyds:** 1-5 High Street (corner of High, Cornmarket, Queen, and St Aldate's Streets).
- **NatWest:** 43 Cornmarket Street
- **Royal Bank of Scotland:** 32 St Giles' (corner of St Giles and Little Clarendon Street).
- **Nationwide:** 44 Queen Street
- **Santander:** Carfax
- **TSB Bank:** 17 George Street

A quick comparison of banking deals is available [here](#).

Once you have opened an account, it can take weeks before your cheque book, debit card, cheque guarantee card (essential for payment by cheque), or credit card are available. Likewise, expect all deposits (except cash) to take up to one week before funds are made available to you.

If your home bank has branches in the UK it might be worth asking if they can set up an account for you in the UK (HSBC for example has branches around the world).

When opening your bank account, you will usually need:

- A means of proving your identity and immigration status: your passport with visa OR your EU national photo ID (whichever is applicable).
- Proof of your UK address: your enrollment letter should work for most banks. HSBC is known to be difficult on this and will insist on demanding bills which you logically will not yet have. You can generate your enrollment certificate from the university's online student self service.

10.3 Electricity and appliances

With the proper precautions and planning, you should be able to bring most of your electrical appliances with you to Oxford. Electricity in the UK operates on a AC 220-240 V, 50 Hz system. If your equipment is designed to run in a range that includes both these figures, you simply need to purchase an adaptor which will allow you to fit your devices' plug(s) to the wall outlets here. Check your devices' specifications. Many recent computers, for instance, are designed to be used in 110-240 V, 50-60 Hz ranges, thus requiring nothing more than an adaptor for use here. These can be picked up at any number of stores in Oxford during your first weeks here (Boswells on Broad Street is a good all-purpose department store).

If your equipment is not rated for the UK electrical system, you will need to purchase a transformer which will alter the electrical current used in the UK to the appropriate current for your equipment. American products, for example, are usually built for AC 110 V, 60 Hz. While almost all transformers will easily handle the step down from 220 V to 110 V, only very expensive ones will change the cycle rate,

ie the 50 Hz to 60 Hz. Any equipment that needs to run constantly at a certain speed from an internal motor (e.g. CD players, blenders, cassette tape players, and clocks) may not work here, and may be damaged through trying them. Again, if in doubt, check your products' specifications and inquire at the dealer or manufacturer.

If your equipment will work with a transformer, make sure you get one that is powerful enough for everything that you plan to use. Transformers can only handle a certain amount of wattage. Add up the total amount of watts used by all of your equipment and make sure it is less than your transformer can handle, or you'll fry your transformer and potentially destroy your equipment. The Oxford University Computing Centre at 13 Banbury Road sells transformers although you would be best advised to pick them up in your home country before you arrive.

If you are living in College, there are a wide range of restrictions on your use of electrical appliances: see the *Dean's Handbook*, Ch 4, pg. 24.

10.4 Work

The *International Student Office* which runs an Orientation programme for all international students at the start of your Oxford career, will be your best and primary resource for advice on visas, work permits, funding, etc. Holders of Tier 4 visas have working hour limitations - your passport sticker and Biometric residence permits (BRPs) should state the exact restrictions (see here: <https://www.ukcisa.org.uk/Information--Advice/Working/Tier-4-work>). These restrictions apply to paid teaching or pastoral work undertaken for a College or the University. The UK government has a scheme for international students to stay in the UK to work after finishing a degree, and full details can be found on their website: <https://www.gov.uk/government/news/uk-announces-2-year-post-study-work-visa-for-international-students>. The *University Careers Service* offers sessions and resources on working internationally or staying to work in the UK.

10.5 Health care

See also

- <http://www.new.ox.ac.uk/international-visiting-students>
- <https://www.nhs.uk/using-the-nhs/about-the-nhs/>

New College belongs to the medical practices Northgate Health Centre; you will be signed up for this service during College orientation. NHS provides free emergency care for all. However, unless you are a citizen of the UK, Australia, New Zealand or the Falkland Islands, you will have to pay a *Health surcharge* of about £300 per year, as part of your visa in order to get access to non-emergency NHS services. You cannot opt out of this. With that paid, you will have a right to free hospital care, free visits to your GP, subsidised prescriptions (£9.90 for most medicine), and subsidised dental care. Sight tests, contact lenses and glasses are not covered by NHS.

10.6 Mobile phones

The UK is a very mobile-phone-centred nation and having a cellphone and UK sim card will probably be very helpful to get in touch with friends while here. Texts (also known as SMS) and phone-based internet chat are two of the main forms of communication, since these are cheaper than calls. If you don't bring a telephone to Oxford from your home country which will work in the UK, you can purchase a phone at any of the telephone retailers - most of which are located on Cornmarket Street (Vodafone, Orange, O2, etc). These retailers can also provide you with telephone service for your mobile. There are two main types of payment for mobile phone usage:

1. **Pay as you go plan.** This means that you deposit money towards your phone account and can make calls and texts until your money runs out.
2. **Pay monthly.** You pay a certain amount a month, for which you get set amounts (sometimes unlimited) of minutes for calls, texts, and internet allowance. The amount of each you get depends on how much you are willing to pay per month!

If you are bringing your own phone you can find a break down of sim-only plans here: <https://www.savethestudent.org/bills-utilities/mobilephones/sim-only-deals.html#deals>.



11. Glossary of Oxford Terminology

As you will have gathered if you have read this far, Oxford has much terminology which is not often heard outside its grey walls. The following is a list of a few of them.

Balls Virtually every college hosts extravagant formal parties known as balls (some smaller ones are called events). They vary greatly in scale. New College rotates hosting a *white tie* Commemoration ball every three years with Magdalen and Worcester Colleges. New College is next due to host a Commemoration ball in 2022!

Battels The bill you receive from College for the various debts you will have incurred, e.g. drinks, chocolate, Guest Night dinners, accommodation.

Black Tie A dress code for formal events. *Men*: dinner suit (tuxedo), though you can usually get away with wearing a black suit, with a bow tie of any colour apart from white; *women*: stylish cocktail-length, or long dress, or equivalent.

Blades An award given when a college rowing team bumps a boat in front for 4 consecutive days in a rowing race. Also provides bragging rights for life.

Blue University award for exceptional achievement in some sports, notably rowing and rugby league.

The Boat Race The famous competition between Oxford and The Other Place (see *Cambridge*) rowing eights in London.

The Bod The Bodleian Library. Not merely the glorious building housing the oldest library in the English-speaking world, but now something resembling a huge multinational corporation that controls all the books in Oxford.

Bop A college party organised by the JCR or MCR. Often themed/fancy dress, usually accompanied by music and dancing.

Bumps A type of rowing race - usually served with Pimms around the end of Hilary and Trinity.

Cambridge A town somewhere to the north-east of Oxford where there is another university. Commonly referred to as *The Other Place*, and those who study there are known as *Tabs* (short for *Cantabridgienses*).

Cherwell A pleasant tributary of the Isis (Thames), upon which you will spend most of your summer punting.

Crew date A dinner held between two sports teams or other societies. Generally involves large quantities of wine and lots of *pennying*.

Cuppers A competition between different colleges at sport.

Dean The Fellow in charge of discipline and eradicating fun at College. He will be the one who calls you to his office if you destroy college property or reputation. He's helped in his lonely mission by an Assistant Dean and a number of Junior Deans (who get free accommodation and High Table food in exchange for becoming humourless).

Dean's handbook Your bible for all College related rules, to be found at <http://www.new.ox.ac.uk/>

deans-handbook

- Don** An academic.
- Eights week** The week in Trinity during which *Summer eights* are held.
- Exchange dinner** A pair of formal dinners held between two colleges' MCRs. A good occasion to meet grad students from other colleges, and enjoy lots of wine and cheese.
- Fellow** An academic member of a college and a member of the SCR. Usually also a tutor for undergraduates.
- Fresher** A new student, whether undergraduate or grad.
- Front Quad** New College's oldest quad. This name stems from back in the days (a very long time ago) when the location of the lodge was at the New College Lane entrance.
- Going down** Depends on the context, but it can mean to leave Oxford.
- Gradel** New College's newest quad located outside of its main site.
- High table** Where the fellows of the college eat dinner. Students may occasionally be invited to join them. Students generally eat at common table, but 4 up to MCR students can apply to dine at High Table every Thursday.
- Hilary term** The second term which runs from January to March.
- Isis** The big river in Oxford. This is the same river that elsewhere is called the Thames. However, where it flows through Oxford it is called the Isis - it is incorrect to call it the Thames.
- JCR** Junior Common Room. The undergraduate body of students and their physical common room. Graduate students are members of this.
- JRF** Junior Research Fellow. Similar to a post-doc. Usually funded from a college's endowment.
- Long vacation** Usually referred to as the long vac. Summer vacation between June and October.
- Matriculation** Ceremony where you formally become part of the University. Done in sub fusc at the end of 1st week in Michaelmas.
- Mound** A small hill with steps in the garden with no apparent purpose other than photograph opportunities and the elusive promise of decadent parties at the top. Best enjoyed with a bottle of Bollinger. Be prepared to be distinctly underwhelmed if anyone offers to demonstrate the 'world-famous quack'.
- MCR** Middle Common Room.
- Michaelmas** The first term between October and December.
- New Buildings** New Buildings (NB) are in the Holywell Quad. The porters' lodge is there and some lecture rooms but it is mainly undergraduate accommodation.
- New College** The best college in Oxford, always called "New College", never "New".
- Old buildings** Old buildings (OB) is the name given to the staircases in both the Front Quad and the Garden Quad.
- Oxford SU** The Oxford University Students Union.
- Oxford Union** Often shortened to *The Union*. A world famous debating society, connected to the university. Beer is £1 a pint, and membership fee is above £200 - at least the priorities are clear.
- Pennying** Banned in College. A practice at crew dates and less reputable colleges, involving trying to insert a penny into someone's wine glass while they are holding it. Victims of pennyng **MUST** then immediately finish their drink!
- Pigeon post** Free University-wide internal mail.
- Porters' lodge** Where you find porters, and your post (in the post room).
- Proctors** Academics who are responsible for discipline and welfare across the University.
- Punting** A way to move around on water slowly, and, unless very practised, hilariously, and something to spend summer doing. At the Other Place they punt from the wrong end of the boat.
- Quad** Short for quadrangle. A roughly square-shaped space, surrounded by buildings. Called *court* in The Other Place.
- Rad Cam** The Radcliffe Camera, part of the Bodleian library.
- Rustication** Not quite expelled, but sent to live far away from College while suspending studying at Oxford as a result of having done a bad, bad thing.
- Scout** The person who cleans your kitchen. Be very nice to them.
- SCR** The Senior Common Room. Where Fellows, and other senior college officers, eat and socialise. Also a collective name for the Senior Members.
- Sent down** To be expelled.
- Sub fusc** Academic dress.

- Summer Eights** The main rowing competition between colleges, held in Trinity term.
- Torpids** A rowing competition between colleges in Hilary.
- Town** Anything or anyone not part of the University.
- Transfer of status** A rite of passage for every DPhil student, involving long vivas and written documents. You will often find DPhil students complaining about this.
- Trashing** A celebration at the end of exams where the examinee is covered in gloop and sparkles by their friends. This is considered to be a prerequisite for the drinking ahead.
- Trinity** The third term between April and June. Also a college.
- Tute** A Tutorial - usually used as an excuse for a lack of fun or responsibility, as in 'no I can't I have a tute'.
- University Parks** A large park owned by the University containing one of the best cricket grounds in the country.
- Varsity** Used to describe a sporting contest between Oxford and The Other Place.
- Viva** Short for viva voce, an extended oral examination. All DPhil students and some undergraduate and Master's students have to face this.
- White Tie** A dress code for events which are more formal than black tie. A couple of balls (known as Commemoration Balls) each year are white tie, including the New College ball. For men there is a complex and restrictive set of rules on dress (Google is your friend!). For women it generally means full-length ball gowns.
- Wykkie Bear** The MCR mascot.



Fig. 11.1: *Ursus wykehamensis collegiinovi*, rare type of ursid, lives in the beams of the *Spoom*

Credit must go where credit is due

Title page background: Photo credit to Fabian Krusa	i
Chapter header <i>From the Mound</i> : Photo credit to Sohpie Nagler	1
Chapter header <i>Flag</i> : Photo credit to Sarah White	3
Chapter header <i>Window</i> : Photo credit to Rudi Rahn	5
Chapter header <i>Lantern</i> : Photo credit to Kira Liebert	9
Chapter header <i>Hall</i> : Photo credit to Irene Yang	16
Chapter header <i>Weston</i> : Photo credit to Sohpie Nagler	19
Chapter header <i>City</i> : Photo credit to Sophie Nagler	21
Chapter header <i>Candles</i> : Photo credit to Irene Yang	25
Chapter header <i>Dagger</i> : Photo credit to Oliver Clarke	27
Chapter header <i>Harry Potter Tree</i> : Photo credit to Sohpie Nagler	31
Chapter header <i>Arch</i> : Photo credit to Ollie Clark	34

